

Triple Clapper Siamese Connections

Feature

- Branding: see below

Material

- Finishes: -P polished or -C polished chrome plated

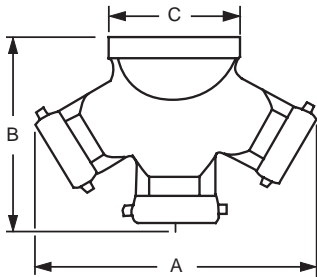
Specification

- Maximum operating pressure: 175 PSI at 70°F (21°C)



Back Outlet

| Outlet Female NPT Thread | (3) Inlets Female NST (NH) Thread | Branding | Cast Brass Part # |
|--------------------------|-----------------------------------|---------------|-------------------|
| 4" | 2-1/2" | AutoSprinkler | TCS4025F |
| | | StandPipe | TCS4025F-SP |
| | | No Branding | TCS4025F-NB |
| 6" | | AutoSprinkler | TCS6025F |
| | | StandPipe | TCS6025F-SP |
| | | No Branding | TCS6025F-NB |



Dimensions

| Size | A | B | C |
|-------------------------------|---------|---------|--------|
| 4" x 2-1/2" x 2-1/2" x 2-1/2" | 13-3/4" | 10-1/2" | 5" |
| 6" x 2-1/2" x 2-1/2" x 2-1/2" | | | 7-1/2" |

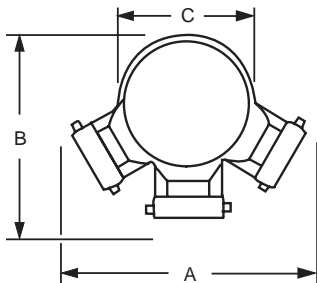
Bottom Outlet

N



| Outlet Female NPT Thread | (3) Inlets Female NST (NH) Thread | Branding | Cast Brass Part # |
|--------------------------|-----------------------------------|---------------|-------------------|
| 4" | 2-1/2" | AutoSprinkler | 90TCS4025F |
| | | No Branding | 90TCS4025F-NB |
| 6" | | AutoSprinkler | 90TCS6025F |
| | | No Branding | 90TCS6025F-NB |

Dimensions



| Size | A | B | C |
|-------------------------------|---------|---------|--------|
| 4" x 2-1/2" x 2-1/2" x 2-1/2" | 14-1/2" | 11-1/2" | 7-5/8" |
| 6" x 2-1/2" x 2-1/2" x 2-1/2" | | | |

NOTE: Special threads, branding, and finishes are available; consult Dixon® for information
 NOTE: Replacement swivels can be ordered on page 821