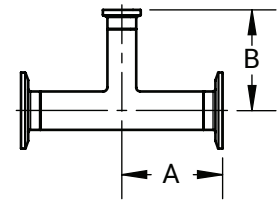
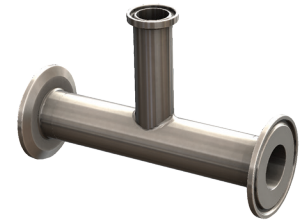


High Purity BioPharm Fittings

Clamp x Clamp x Clamp Reducing Tees - T7RMP

621
63-04

Tube O.D.	A (in)	B (in)	PL Finish - SF1	PM Finish - SF4
3/4" x 1/2"	2.500	2.500	T7RMP-075050PL	T7RMP-075050PM
1" x 1/2"	2.625	2.625	T7RMP-100050PL	T7RMP-100050PM
1" x 3/4"	2.625	2.625	T7RMP-100075PL	T7RMP-100075PM
1-1/2" x 1/2"	2.875	2.875	T7RMP-150050PL	T7RMP-150050PM
1-1/2" x 3/4"	2.875	2.875	T7RMP-150075PL	T7RMP-150075PM
1-1/2" x 1"	2.875	2.875	T7RMP-150100PL	T7RMP-150100PM
2" x 1/2"	3.375	3.125	T7RMP-200050PL	T7RMP-200050PM
2" x 3/4"	3.375	3.125	T7RMP-200075PL	T7RMP-200075PM
2" x 1"	3.375	3.125	T7RMP-200100PL	T7RMP-200100PM
2" x 1-1/2"	3.375	3.125	T7RMP-200150PL	T7RMP-200150PM
2-1/2" x 1/2"	3.625	3.375	T7RMP-250050PL	T7RMP-250050PM
2-1/2" x 3/4"	3.625	3.375	T7RMP-250075PL	T7RMP-250075PM
2-1/2" x 1"	3.625	3.375	T7RMP-250100PL	T7RMP-250100PM
2-1/2" x 1-1/2"	3.625	3.375	T7RMP-250150PL	T7RMP-250150PM
2-1/2" x 2"	3.625	3.375	T7RMP-250200PL	T7RMP-250200PM
3" x 1/2"	3.875	3.625	T7RMP-300050PL	T7RMP-300050PM
3" x 3/4"	3.875	3.625	T7RMP-300075PL	T7RMP-300075PM
3" x 1"	3.875	3.625	T7RMP-300100PL	T7RMP-300100PM
3" x 1-1/2"	3.875	3.625	T7RMP-300150PL	T7RMP-300150PM
3" x 2"	3.875	3.625	T7RMP-300200PL	T7RMP-300200PM
3" x 2-1/2"	3.875	3.625	T7RMP-300250PL	T7RMP-300250PM
4" x 1/2"	4.750	4.125	T7RMP-400050PL	T7RMP-400050PM
4" x 3/4"	4.750	4.125	T7RMP-400075PL	T7RMP-400075PM
4" x 1"	4.750	4.125	T7RMP-400100PL	T7RMP-400100PM
4" x 1-1/2"	4.750	4.125	T7RMP-400150PL	T7RMP-400150PM
4" x 2"	4.750	4.375	T7RMP-400200PL	T7RMP-400200PM
4" x 2-1/2"	4.750	4.375	T7RMP-400250PL	T7RMP-400250PM
4" x 3"	4.750	4.375	T7RMP-400300PL	T7RMP-400300PM
6" x 3"	7.125	5.375	T7RMP-600300PL	T7RMP-600300PM
6" x 4"	7.125	5.750	T7RMP-600400PL	T7RMP-600400PM

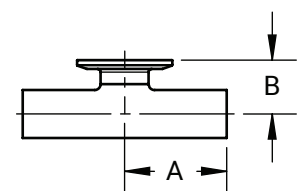
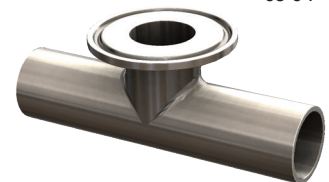
BPE Table DT-4.1.2-8
ASME BPE 2019

M

Weld x Weld x Clamp Short Outlet Tees - T7WWMS

621
63-04

Tube O.D.	A (in)	B (in)	Nominal wall (in)	PL Finish - SF1	PM Finish - SF4
1/2"	1.875	1.000	0.065	T7WWMS-050PL	T7WWMS-050PM
3/4"	2.000	1.125	0.065	T7WWMS-075PL	T7WWMS-075PM
1"	2.125	1.125	0.065	T7WWMS-100PL	T7WWMS-100PM
1-1/2"	2.375	1.375	0.065	T7WWMS-150PL	T7WWMS-150PM
2"	2.875	1.625	0.065	T7WWMS-200PL	T7WWMS-200PM
2-1/2"	3.125	1.875	0.065	T7WWMS-250PL	T7WWMS-250PM
3"	3.375	2.125	0.065	T7WWMS-300PL	T7WWMS-300PM
4"	4.125	2.750	0.083	T7WWMS-400PL	T7WWMS-400PM
6"	5.625	4.625	0.109	T7WWMS-600PL	T7WWMS-600PM

BPE Table DT-4.1.2-2
ASME BPE 2019

NOTE: BPE 2019 Specifications

PL Finish – SF1

O.D. = 32Ra Mechanically Polished

I.D. = 20Ra Mechanically Polished

PM Finish – SF4

O.D. = 32Ra Mechanically Polished

I.D. = 15Ra Mechanically Polished and Electropolished