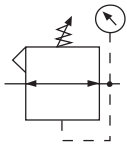
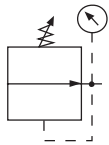


Regulator R08



Relieving

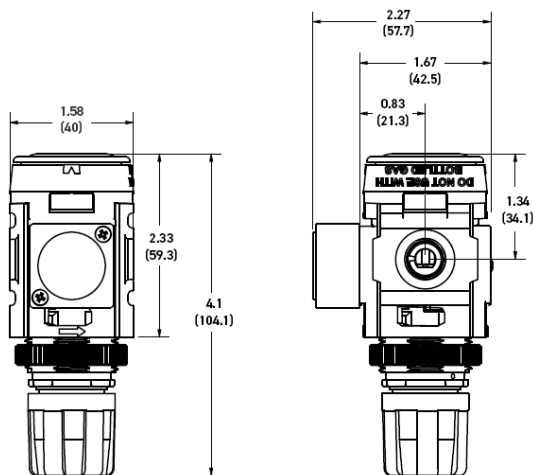


Non-Relieving



Features

- Balanced Valve Design
- Unique Flush-mounted Pressure Gauge
- Light Weight
- Modern Modular Design and Appearance



Inches (mm)

NOTE: 1.20 in. (30mm) hole required for panel nut mounting.

Specifications

Flow Capacity*	1/4	73 SCFM (34 dm ³ /s, ANR)
Adjusting Range Pressure	0 to 30 PSIG (0 to 2 bar) 0 to 60 PSIG (0 to 4 bar) 0 to 125 PSIG (0 to 8 bar) 0 to 232 PSIG (0 to 16 bar)	
Maximum Supply Pressure	300 PSIG (20.7 bar)	
Operating Temperature†	-4° to 150°F (-20° to 65.5°C)	
Port Size	NPT / BSPP-G	1/4
Weight	0.37 lb. (0.17 kg)	

* Inlet pressure 145 psig (10 bar). Secondary pressure 100 psig (6.9 bar) and 14.5 psig (1 bar) pressure drop.

† Units with square gauges: 5°F to 150°F (-15°C to 65.5°C)

Gauge supplied with every part. Gauge can be installed on the front or back of the regulator. If no gauge is installed, both seal screws must be installed.

Materials of Construction

Adjustment Knob	Acetal
Body	Aluminum
Bottom Cap	Glass-filled Nylon
Bonnet	Glass-filled Nylon
Diaphragm Assembly	Stainless Steel / Nitrile
Panel Nut	Acetal
Seals	Nitrile
Springs	Steel
Valve Assembly	Acetal / Nitrile



WARNING

**Product rupture can cause serious injury.
Do not connect regulator to bottled gas.
Do not exceed maximum primary pressure rating.**

CAUTION:

REGULATOR PRESSURE ADJUSTMENT – The working range of knob adjustment is designed to permit outlet pressures within their full range. Pressure adjustment beyond this range is also possible because the knob is not a limiting device. This is a common characteristic of most industrial regulators, and limiting devices may be obtained only by special design.

For best performance, regulated pressure should always be set by increasing the pressure up to the desired setting.

Replacement Kits

Adjusting Knob GRP-96-792

Accessories

Panel Mount Nut –

Aluminum RPA-96-773

Plastic RPA-96-734

Pressure Gauge– (*see note below)

Square flush mount gauge

0-4 bar GRP-96-791-04B

0-11 bar GRP-96-791-11B

0-20 bar GRP-96-791-20B

0-60 PSIG GRP-96-791-060

0-160 PSIG GRP-96-791-160

0-290 PSIG GRP-96-791-290

*For R08/R09 Regulators with date code after November 2023 (4423 Date Code), please use these part numbers when ordering a replacement gauge.

Square flush mount gauge

0-4 bar K4511SCR04B

0-11 bar K4511SCR11B

0-60 PSIG K4511SCR060

0-160 PSIG K4511SCR160

Square with adapter kit

0-4 bar P6G-PR10040

0-11 bar P6G-PR10110

0-60 PSIG P6G-PR90060

0-160 PSIG P6G-PR90160

50mm (2") round 1/4" center back mount

0-30 PSIG / 0-2 bar K4520N14030

0-60 PSIG / 0-4 bar K4520N14060

0-160 PSIG / 0-11 bar K4520N14160

0-300 PSIG / 0-20 bar K4520N14300

1-3/4" Digital Round 1/4" NPT

0 to 160 PSIG K4517N14160D

Tamperproof Lock and Cover Kit

(lock not included) RPA-96-736B

Wall Mounting Bracket –

C-Type GPA-97-010

L-Type GPA-96-739

T-Type GPA-96-737

Ordering Information

Model Type	Port Size	With Gauge 0 to 125 PSIG (0 to 8.6 bar)	With Gauge 0 to 30 PSIG (0 to 2.1 bar)	With Gauge 0 to 60 PSIG (0 to 4.1 bar)
Relieving	1/4	R08-02-F0G0B	R08-02-C0G0B	R08-02-D0G0B

Options - To order an option supplied with the unit model, add the appropriate coded suffix letter in the designated position of the model number.

 = "Most Popular"

R08 1/4" Regulator

