

Female Tees

Feature

- Ref SAE 130438

NPTF Thread	Extruded Brass		Opt Qty	Forged Lead-Free Brass ^{1, 2, 3} Part #	316 Stainless Steel ³ Part #	Opt Qty
	Previous Part #	Part #				
1/8"	322-0202	3220202C ⁴	25	---	3220202SS	25
1/4"	322-0404	3220404C ⁴	25	3220404CLF	3220404SS	25
3/8"	322-0606	3220606C	25	3220606CLF	3220606SS	25
1/2"	322-0808	3220808C ⁴	25	---	3220808SS	10
3/4"	322-1212	3221212C	10	---	3221212SS	10
1"	---	---	---	---	3221616SS	5

¹ Lead-free brass <=0.25% lead; Alloy CA2745; Alloy C46400

² Conforms To: Safe Drinking Water Act (SDWA) of Jan. 4, 2014; California AB1953; RoHS Compliant

³ NPT thread

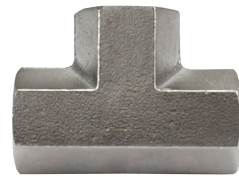
⁴ Product shape may vary



extruded brass



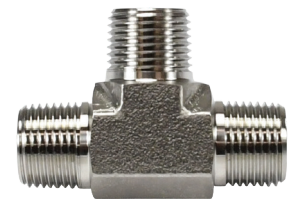
lead-free brass



316 stainless steel

Male NPT Tees

NPT Thread	316 Stainless Steel Part #	Opt Qty
1/8"	3280202SS	25
1/4"	3280404SS	25
3/8"	3280606SS	25
1/2"	3280808SS	10
3/4"	3281212SS	10
1"	3281616SS	5



NOTE: For additional information on pipe dimensions please reference dixonvalve.com.