

CIP Internal Expansion (IX) Sanitary Style Hose Couplings

Applications

- Used in the food, dairy, and beverage industries

Feature

- Flow Chief internal expansion (IX) fittings are only to be used with Flow Chief stainless steel ferrules

Approval

- Clean-in-place (CIP) compliant

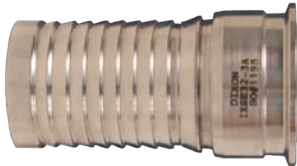
Sanitary Style Clamp End Stems

Features

- See pages 673 - 681 for sanitary style gaskets
- See pages 595 - 598 for sanitary style clamps

Approvals

- 3A compliant when assembled by 3A authorized hose shop
- Special plug is required to expand CIP compliant fittings
- Special adapter plate is required to expand 1-1/2" CIP compliant fittings



Size	304 Stainless Steel Part #
1-1/2"	IXSE24-3A
2"	IXSE32-3A
3"	IXSE48-3A

Special Expansion Plugs for CIP Compliant IX Fitting

Hose Size	304 Stainless Steel Part #
1-1/2"	IXFDPLG137
2"	IXFDPLG187
3"	IXFDPLG287



CIP Internal Expansion (IX) Sanitary Style Tube Weld End Stem

Feature

- Special plug is required to expand CIP compliant fittings

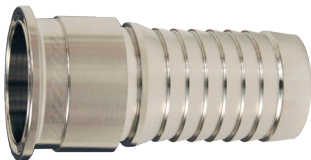


Size	304 Stainless Steel Part #
2"	IXPE32-3A

Internal Expansion (IX) Sanitary Style
Clamp End Stems

Features

- Clamp end x hose shank
- Flow Chief internal expansion (IX) fittings are only to be used with Flow Chief stainless steel ferrules
- See pages 673 - 681 for sanitary style gaskets
- See pages 595 - 598 for sanitary style clamps



Size	304 Stainless Steel Part #
1-1/2"	IXSE24
2"	IXSE32
2-1/2"	IXSE40
3"	IXSE48
4"	IXSE64