

Synthetic Single Jacket Mill Hose

Application

- Used in open end water discharge applications only; not intended for fire fighting service



Feature

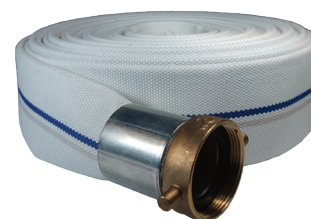
- Consult Dixon® for pricing and availability of additional lengths and other configurations

Materials

- Outer construction: single jacket, all polyester
- Tube construction: black, PVC rubber

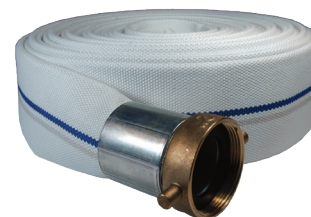
Coupled with NPSH female and male King™ short shank couplings, crimp sleeve, aluminum shank with brass pin lug swivel nut

| Size | Length | Working Pressure PSI at 70°F (21°C) | Part # |
|--------|--------|-------------------------------------|-----------|
| 1-1/2" | 25' | 75 | M15-25KAS |
| | 50' | | M15-50KAS |
| 2" | 25' | 75 | M20-25KAS |
| | 50' | | M20-50KAS |
| 2-1/2" | 25' | 50 | M25-25KAS |
| | 50' | | M25-50KAS |
| 3" | 25' | 50 | M30-25KAS |
| | 50' | | M30-50KAS |



Coupled with NST (NH) female and male King™ short shank couplings, crimp sleeve, aluminum shank with brass pin lug swivel nut

| Size | Length | Working Pressure PSI at 70°F (21°C) | Part # |
|--------|--------|-------------------------------------|-----------|
| 1-1/2" | 25' | 75 | M15-25KAF |
| | 50' | | M15-50KAF |
| 2-1/2" | 25' | 50 | M25-25KAF |
| | 50' | | M25-50KAF |


N

Coupled with female and male (C & E) global aluminum cam and groove, crimp sleeve

| Size | Length | Working Pressure PSI at 70°F (21°C) | Part # |
|--------|--------|-------------------------------------|-----------|
| 1-1/2" | 25' | 112 | M15-25GAX |
| | 50' | | M15-50GAX |
| 2" | 25' | 112 | M20-25GAX |
| | 50' | | M20-50GAX |
| 2-1/2" | 25' | 112 | M25-25GAX |
| | 50' | | M25-50GAX |
| 3" | 25' | 112 | M30-25GAX |
| | 50' | | M30-50GAX |
| 4" | 25' | 112 | M40-25GAX |
| | 50' | | M40-50GAX |

