

True I.D. Fittings

PTFE Hose Fittings

Sanitary Tri-Clamps

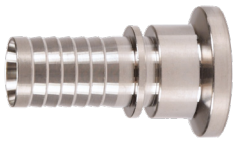
Application

- For use with True I.D. PTFE hoses on page 1029



Hose Size	Clamp Size	316 Stainless Steel Part #
1/2"	1"	TCR-T08-16
1/2"	1-1/2"	TCR-T08-24
3/4"	1-1/2"	TCR-T12-24
1"	1"	TCR-T16-16
1"	1-1/2"	TCR-T16-24
1-1/2"	1-1/2"	TCR-T24-24
2"	2"	TCR-T32-32

Mini Sanitary Tri-Clamps



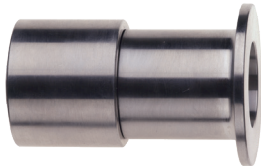
Size	316 Stainless Steel Part #
1/2"	TCMR-T08
3/4"	TCMR-T12

NOTE: For GSM and PTFE hose assemblies contact Dixon® at 888.226.4673.

Flange Retainers

Feature

- For use with lap joint flanges. See page 970



Size	316 Stainless Steel Part #	316 Stainless Steel PTFE Encapsulated Part #
1/2"	FRR-T08	---
3/4"	FRR-T12	FRRE-T12
1"	FRR-T16	FRRE-T16
1-1/4"	---	FRRE-T20
2"	FRR-T32	---

Crimp Collars

Convoluted Crimp Collars

Features

- For True I.D. open pitch convoluted PTFE hose only
- New design for ease of installation and improved appearance of finished crimp



Size	Carbon Steel Part #	304 Stainless Steel Part #
1/4"	CSC-T04-1	SSC-T04-1
3/8"	CSC-T06-1	SSC-T06-1
1/2"	CSC-T08-1	SSC-T08-1
3/4"	CSC-T12-1	SSC-T12-1
1"	CSC-T16-1	SSC-T16-1
1-1/4"	CSC-T20-1	SSC-T20-1
1-1/2"	CSC-T24-1	SSC-T24-1
2"	CSC-T32-1	SSC-T32-1

Smooth Bore Crimp Collars

Features

- For True I.D. smooth bore PTFE hose only
- New design for ease of installation and improved appearance of finished crimp



Size	Carbon Steel Part #	304 Stainless Steel Part #
1/4"	CSC-T04-2	SSC-T04-2
3/8"	CSC-T06-2	SSC-T06-2
1/2"	CSC-T08-2	SSC-T08-2
3/4"	CSC-T12-2	SSC-T12-2
1"	CSC-T16-2	SSC-T16-2

Contact Dixon at 888.226.4673 for assembly instructions and crimp recommendations.