

Tube Block Hangers

Applications

- Clean rooms and mechanical areas; not limited to: biotech, pharmaceutical, and food processing
- Low flow and low pressure systems with moderate vibration: WFI, SIP, CIP, process, utility, and instrument lines

Sizes

- Support range: 1/2" to 4"; optional 6" – contact Dixon Sanitary at 800.789.1718

Features

- Insulation envelope: reduced O.D. allows hanger to be buried under the insulation jacket.
- ZERO PUDDLE silicone inserts raised geometry facilitates drainage of liquids on vertical/riser lines
- There are no exposed threads or openings in hardware plates

Materials

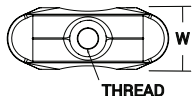
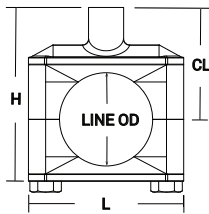
- ZERO PUDDLE silicone rubber inserts are available with FDA and UL ratings
- Hardware: 304 standard option and 316 stainless steel available upon request

Specifications

- Intermittent temperatures from -40°F to 320°F (-40°C to 160°C)
- Continuous temperatures from -20° to 285°F (-29°C to 140°C)

Approvals

- All plates polished; bolts are cleaned and nuts are lubricated with FDA approved product
- Hanger threads match MSS SP-69 rod O.D. requirements

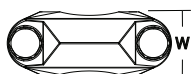
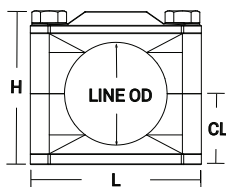


Hang Plate Block Hangers – B24-HP

Tube O.D.	Line O.D. (in)	H (in)	L (in)	W (in)	CL (in)	Thread	304 Stainless Steel Part #
1/2"	0.50	2.29	1.93	0.75	1.55	3/8"-16	B24-HP-G050
3/4"	0.75						B24-HP-G075
1"	1.00		1.96				B24-HP-G100
1-1/2"	1.50	2.79	2.49	0.88	1.80	1/2"-13	B24-HP-G150
2"	2.00	3.29	2.99		2.05		B24-HP-G200
2-1/2"	2.50	3.58	3.36		2.09		B24-HP-G250
3"	3.00	5.18	3.99	1.00	3.30	5/8"-11	B24-HP-G300
4"	4.00	6.36	5.10		4.05		B24-HP-G400

Weld Plate Block Hangers – B24-WP

Tube O.D.	Line O.D. (in)	H (in)	L (in)	W (in)	CL (in)	304 Stainless Steel Part #
1/2"	0.50	1.73	1.93	0.75	0.79	B24-WP-G050
3/4"	0.75					B24-WP-G075
1"	1.00		1.96			B24-WP-G100
1-1/2"	1.50	2.23	2.49	0.88	1.03	B24-WP-G150
2"	2.00	2.75	2.99		1.31	B24-WP-G200
2-1/2"	2.50	3.25	3.36		1.55	B24-WP-G250
3"	3.00	3.97	3.99	1.00	1.91	B24-WP-G300
4"	4.00	4.87	5.10		2.39	B24-WP-G400



M