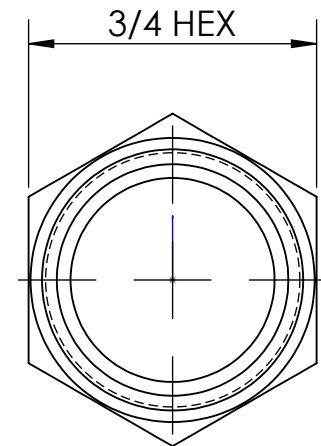
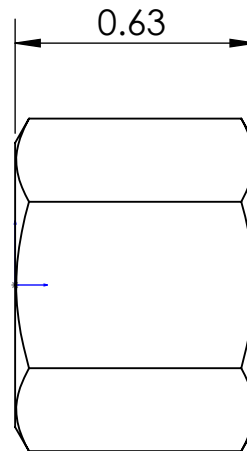
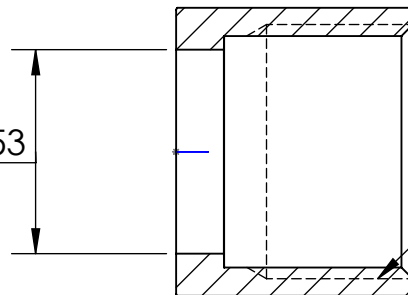


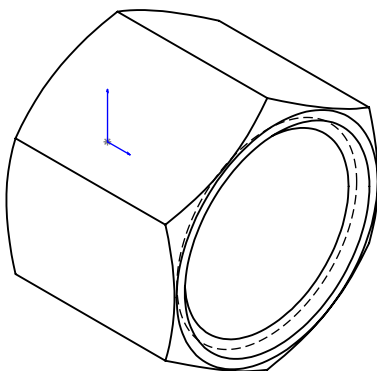
LINE DRAWING NOT FOR PRODUCTION PURPOSES



(THRU HOLE DIA.)  $\phi 0.53$



3/8 - 18 NPSM  
THREAD



THIS DRAWING CONTAINS INFORMATION DEEMED PROPRIETARY TO DIXON BRASS AND IS SO TO BE USED ONLY FOR THE PURPOSE FOR WHICH IT IS SUBMITTED, AND FURTHER, SHALL NOT BE COPIED IN WHOLE OR IN PART WITHOUT EXPRESS WRITTEN PERMISSION FIRST OBTAINED FROM DIXON BRASS.						
UNLESS OTHERWISE SPECIFIED:		<div style="display: flex; align-items: center;"> <div> <b>Dixon Brass</b>  Westmont, Illinois USA </div> </div>				
DIMENSIONS ARE IN INCHES TOLERANCES: ANGLES: $\pm 0^{\circ}30'$ .X ( $\pm .015$ ) .XX ( $\pm .010$ ) .XXX ( $\pm .005$ ) DIMENSIONS PER ANSI Y14.5		DRAWN P. MONAGHAN APPROVED ECO NO.	DATE 2/27/14 DATE			
<b>TITLE:</b> FEMALE SWIVEL NUT 3/8 - 18 NPSM		DRAWING NOT REPRODUCED TO SCALE <table border="1" style="width: 100%;"> <tr> <td style="width: 20%;"> <b>SIZE</b>  A </td> <td style="width: 60%;"> <b>DWG. NO.</b>  1240806N </td> <td style="width: 20%;"> <b>REV</b>  C </td> </tr> </table>		<b>SIZE</b> A	<b>DWG. NO.</b> 1240806N	<b>REV</b> C
<b>SIZE</b> A	<b>DWG. NO.</b> 1240806N	<b>REV</b> C				