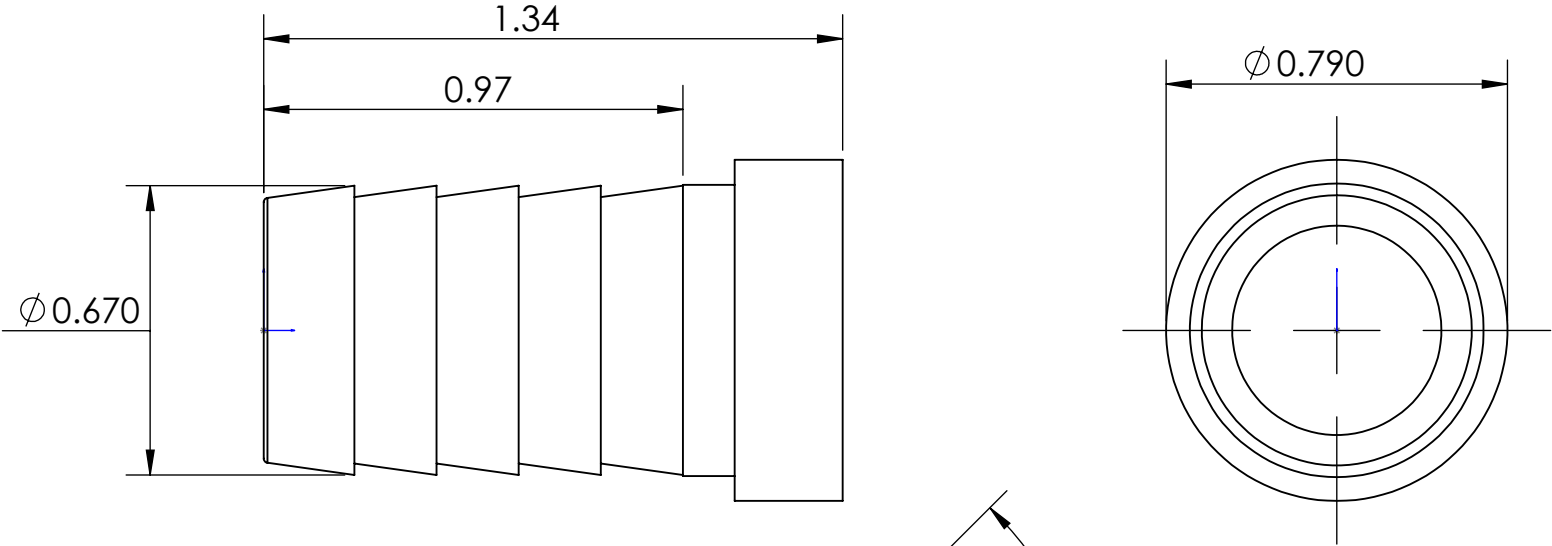
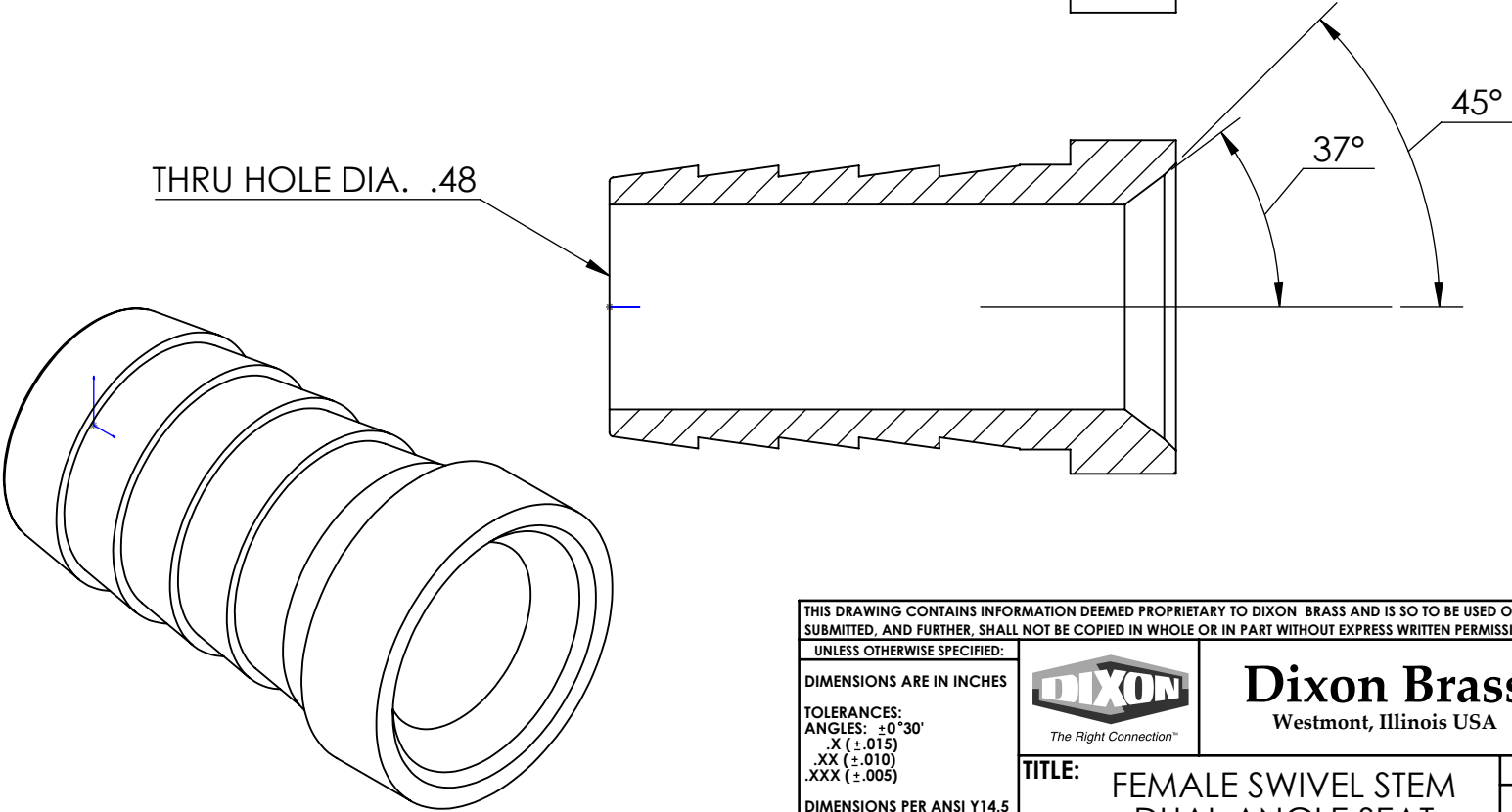



LINE DRAWING NOT FOR PRODUCTION PURPOSES



THRU HOLE DIA. .48



THIS DRAWING CONTAINS INFORMATION DEEMED PROPRIETARY TO DIXON BRASS AND IS SO TO BE USED ONLY FOR THE PURPOSE FOR WHICH IT IS SUBMITTED, AND FURTHER, SHALL NOT BE COPIED IN WHOLE OR IN PART WITHOUT EXPRESS WRITTEN PERMISSION FIRST OBTAINED FROM DIXON BRASS.						
UNLESS OTHERWISE SPECIFIED:		 <i>The Right Connection™</i>	Dixon Brass Westmont, Illinois USA		DRAWN P. MONAGHAN	DATE 7/20/15
DIMENSIONS ARE IN INCHES TOLERANCES: ANGLES: ±0°30' .X (±.015) .XX (±.010) .XXX (±.005) DIMENSIONS PER ANSI Y14.5					APPROVED	DATE
					ECO NO.	
					TITLE: FEMALE SWIVEL STEM DUAL ANGLE SEAT	
			SIZE A	DWG. NO. 1431014S	REV C	