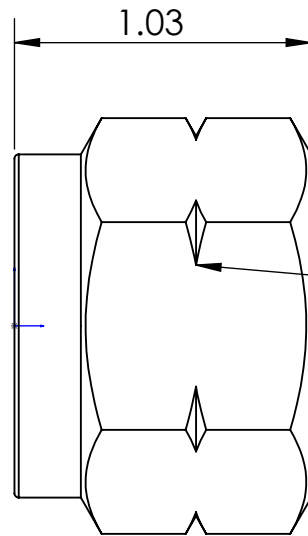
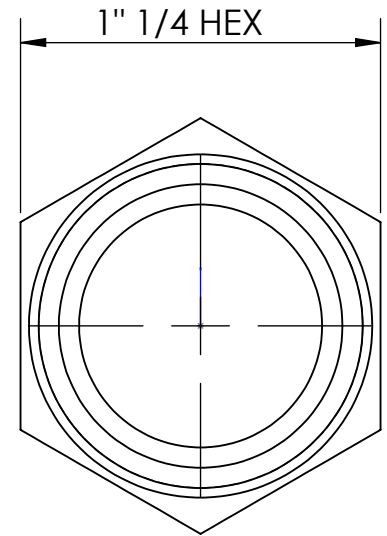


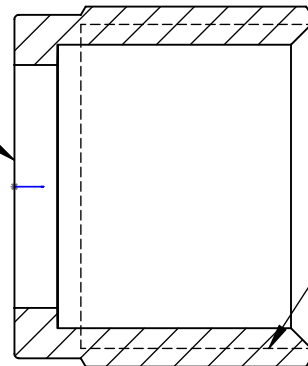
LINE DRAWING NOT FOR PRODUCTION PURPOSES



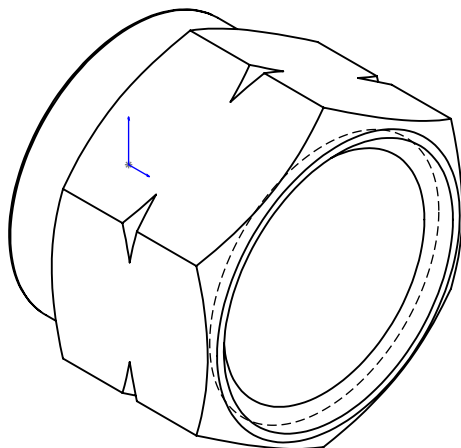
V GROOVE DENOTES  
THREAD TYPE



THRU HOLE DIA. 0.850  
0.845



1" 1/16 - 14 UNS 2B  
THREAD



THIS DRAWING CONTAINS INFORMATION DEEMED PROPRIETARY TO DIXON BRASS AND IS SO TO BE USED ONLY FOR THE PURPOSE FOR WHICH IT IS SUBMITTED, AND FURTHER, SHALL NOT BE COPIED IN WHOLE OR IN PART WITHOUT EXPRESS WRITTEN PERMISSION FIRST OBTAINED FROM DIXON BRASS.						
UNLESS OTHERWISE SPECIFIED:		 <i>The Right Connection™</i>	<b>Dixon Brass</b> Westmont, Illinois USA	DRAWN P. MONAGHAN		DATE 5/27/14
DIMENSIONS ARE IN INCHES				APPROVED		DATE
				ECO NO.		
TOLERANCES: ANGLES: ±0°30' .X (±.015) .XX (±.010) .XXX (±.005)				<b>TITLE:</b> SAE FEMALE SWIVEL NUT		DRAWING NOT REPRODUCED TO SCALE
DIMENSIONS PER ANSI Y14.5		SIZE <b>A</b>	DWG. NO. 1441217N			REV A