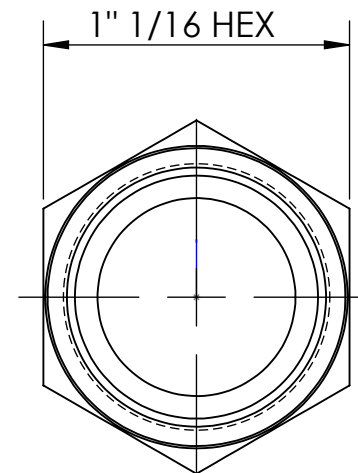
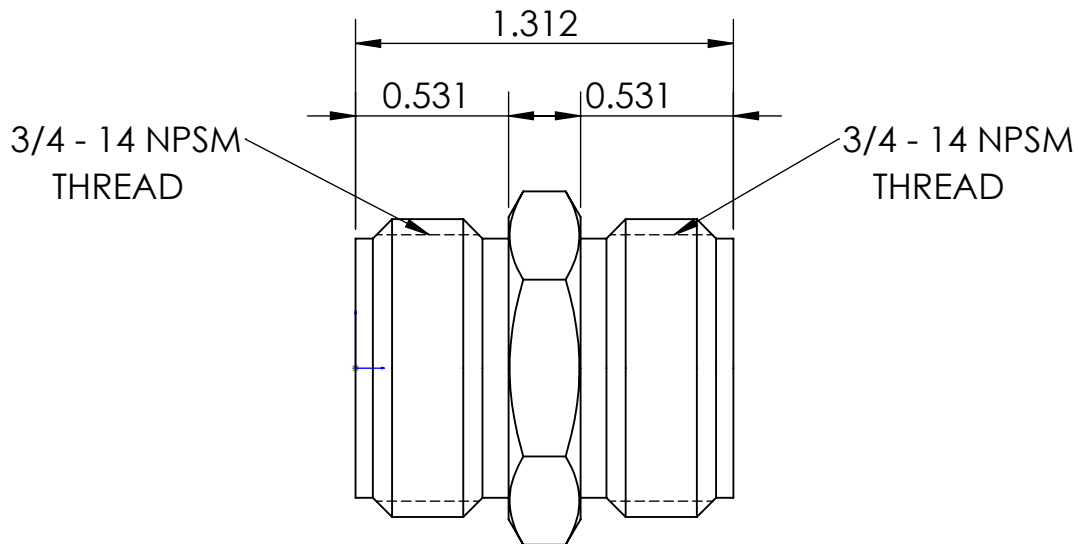
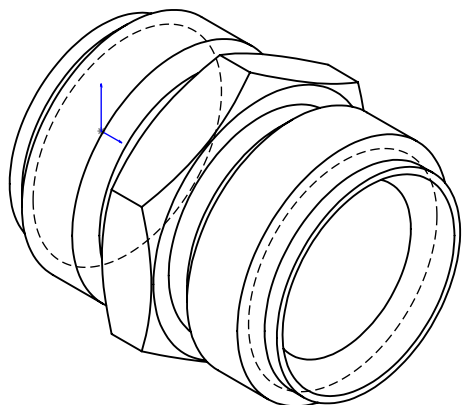
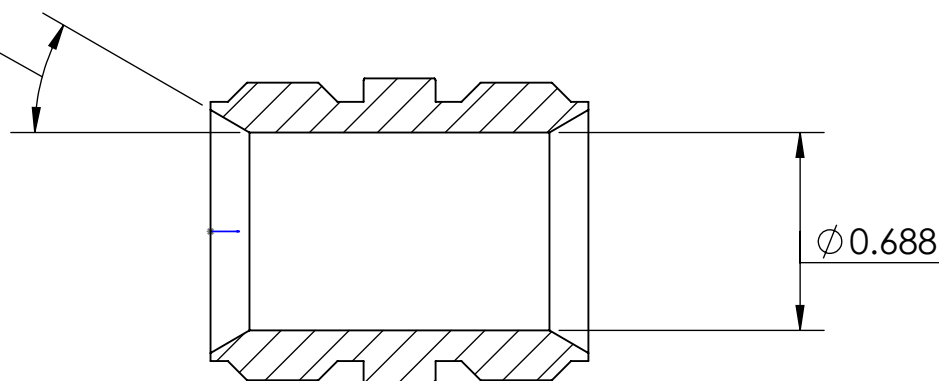


LINE DRAWING NOT FOR PRODUCTION PURPOSES



30° BOTH ENDS



THIS DRAWING CONTAINS INFORMATION DEEMED PROPRIETARY TO DIXON BRASS AND IS SO TO BE USED ONLY FOR THE PURPOSE FOR WHICH IT IS SUBMITTED, AND FURTHER, SHALL NOT BE COPIED IN WHOLE OR IN PART WITHOUT EXPRESS WRITTEN PERMISSION FIRST OBTAINED FROM DIXON BRASS.

UNLESS OTHERWISE SPECIFIED:

DIMENSIONS ARE IN INCHES

TOLERANCES:
 ANGLES: $\pm 0^{\circ}30'$
 .X ($\pm .015$)
 .XX ($\pm .010$)
 .XXX ($\pm .005$)

DIMENSIONS PER ANSI Y14.5



Dixon Brass
 Westmont, Illinois USA

DRAWN P. MONAGHAN	DATE 4/14/15
APPROVED	DATE
ECO NO.	

TITLE: MALE UNION
 NPSM TO NPSM

DRAWING NOT REPRODUCED TO SCALE		
SIZE A	DWG. NO. 1761212C	REV A