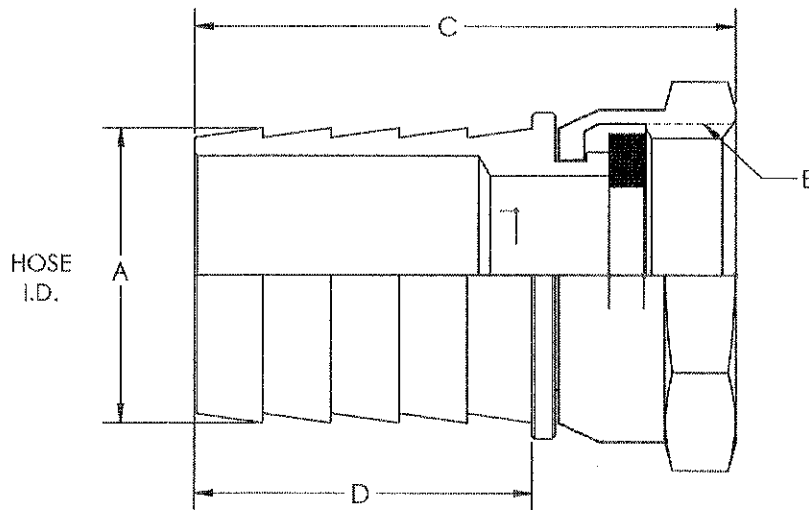


LINE DRAWING NOT FOR PRODUCTION PURPOSES



**PROPRIETARY AND CONFIDENTIAL**

This drawing is owned by Dixon Valve & Coupling Co. and shall be returned upon demand. It is loaned on condition that it shall not be copied or reproduced or submitted to others without the owners consent. In accepting it, subject to this condition, the recipient further agrees that this drawing or any design detail or concept disclosed herein shall not be used in any way detrimental to or in competition with the owner. If the recipient does not agree to the terms of this agreement they shall return this drawing immediately. The information contained in this drawing is subject to change without notice.



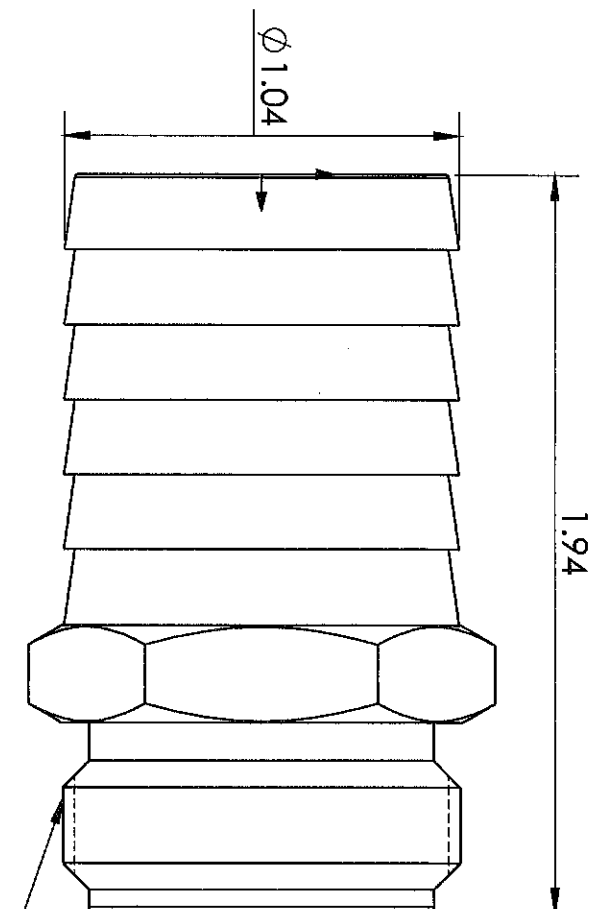
**Dixon Brass**  
Westmont, Illinois USA

DRAWN P. MONAGHAN	DATE 5/15/25
APPROVED	DATE
ECO NO.	

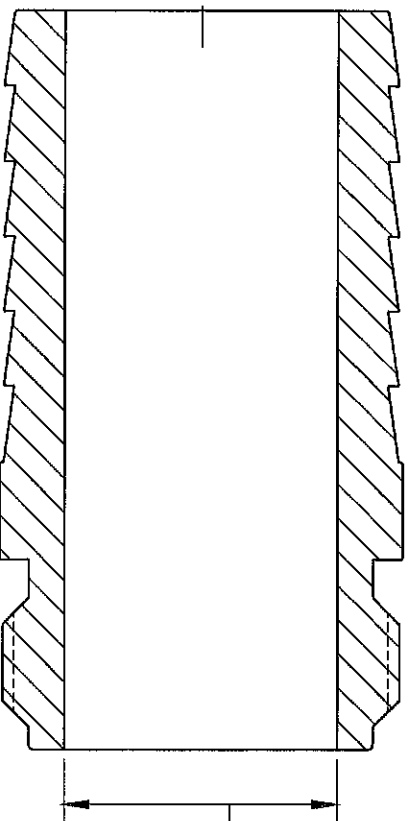
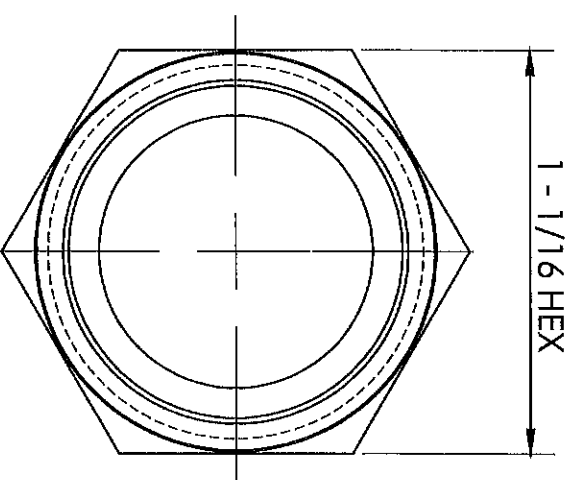
**TITLE:** FEMALE SWIVEL  
GARDEN HOSE FITTING

DO NOT SCALE THIS DRAWING		
SIZE <b>A</b>	DWG. NO. 5911612C	REV A

# LINE DRAWING NOT FOR PRODUCTION PURPOSES



3/4 - 11 - 1/2 NH



$\phi 23/32$

**MATERIAL 1 - 1/16 HEX ALLOY 360 BRASS**

This drawing is owned by Dixon Valve & Coupling Co. and shall be returned upon demand. It is loaned on condition that it shall not be copied or reproduced or submitted to others without the owners consent. In accepting it, subject to this condition, the recipient further agrees that this drawing or any design detail or concept disclosed herein shall not be used in any way detrimental to or in competition with the owner. If the recipient does not agree to the terms of this agreement they shall return this drawing immediately. The information contained in this drawing is subject to change without notice.



**Dixon Brass**  
Westmont, Illinois USA

DRAWN	DATE
H. BARRERA	12/14/17
APPROVED	DATE
ECO NO.	

**TITLE:**

1" BARB  
GARDEN HOSE MALE

DO NOT SCALE THIS DRAWING

SIZE	DWG. NO.	REV
A	5901612C	A