



Customer Service
800.789.1718

BEO-Series Electric Actuator

The quarter-turn BEO-series electric actuator is an alternative to the rack and pinion actuator when an air supply isn't available. This electric actuator is used with sanitary and industrial valves for quarter turn actuation in industrial, food/beverage, and pharmaceutical applications.

Certifications

- CSA (except BM-2), CE (except for BM-2), UKCA (except BM-2), RoHS, China RoHS, REACH

Features

- ISO 5211 mounting flange
- Self-locking gear system
- Mechanical position indication
- Mechanical stops (except OM-1 / A / BM-2)
- Built-in thermal protection
- 30% duty cycle
- Clutchless manual override (for safe operation, handwheel does not rotate during operation)
- Standard anti-condensation heater to prevent the freezing of lubricants and keep interior dry to prevent product damage from moisture (heater not recommended if ambient temperature is over **95°F** or **35°C**)
- Enclosure features
 - Aluminum alloy, polyester powder coated
 - Corrosion protection C3 according to ISO 12944-6
 - OM-1, OM-A, BM-2, and BM-T utilize a plastic clover
 - NEMA 4X, 5, and IP67 (waterproof and dustproof enclosure intended for outdoor use)
- Gear train features
 - High alloy steel gear trains with self locking to avoid backlash
 - Gear trains are factory lubricated for life
- Motor features
 - Insulation class F
 - Built in thermal protection prevents motor burnout
 - AC motor: **257±9°F (125±5°C)**
 - DC motor: **194±9°F (90±5°C)**

Specifications

- Standard connections: ISO 5211 mounting flange
- Working temperature range: **-22°F to 149°F (-30°C to 65°C)**
- Working relative humidity range: 30% to 90%
- Standard voltages: 12 VDC, 12 VAC, 24 VDC/AC, 115VAC, 220VAC
- Options
 - **Heater thermostat:** can switch the anti-condensation heater off when the temperature inside the actuator is higher than **77±9°F (25±5°C)**
 - **Auxiliary limit switches:** actuators come standard with two limit switches (LS1 for fully open and LS2 for fully closed position). Two auxiliary limit switches are optional for fully open and fully closed position feedback.
 - **Modulating control:** a proportional control unit
 - Analog signal input: 4-20mA, 1-5V, and 2-10V
 - Analog signal output: 4-20mA and 2-10V
 - **Potentiometer unit:** recommended to use with a floating control actuator to output signal for position indicator. Two resistors, 1K ohm or 5K ohm are available for selection.
 - **Analog signal output:** recommended to use with a floating control actuator for position indication
 - Analog signal output: 0-20mA, 4-20mA, 0-5V, 0-10V, 1-5V, and 2-10V
 - **Extended duty cycle controller** (including motor, IEC standard): 75% duty cycle available for OM-A, OM-1 to OM-6
 - **Enclosure material:** IP68 316 stainless steel; available for OM-1 to OM-6
 - **Torque switch:** torque overload protection. Must be ordered with actuator, installed and set up at factory
 - **Local control unit:** contains LOCAL/REMOTE and CLOSE/OFF/OPEN rotary switches. In LOCAL mode, the valves are directly being controlled in the field and can be operated to close, stop, or open by using CLOSE/OFF/OPEN selector switch.
 - Standard: IP65
 - Optional: IP67, NEMA 4X
 - For OM-1 and OM-A: LCU is only available for floating control units
 - For OM-2 to OM-6: three phase power supply units with modulating control must be optioned with LCU



BEO-Series Electric Actuator - Part Number Key

BEO-Series Electric Actuator Part Number Key Example: BEOM-TB-11		Series	Model	Voltage		Option 1	Option 2	Indicator
		BE	BM-T	B	-	1	1	
Series	Code							
BE	BE	←						
Model	Code							
BM-T ¹	BM-T		←					
OM-1	OM-1							
OM-A	OM-A							
OM-M	OM-M							
OM-2	OM-2							
BM-2 ²	BM-2							
OM-3	OM-3							
OM-4	OM-4							
OM-5	OM-5							
OM-6	OM-6							
Voltage	Code							
115 VAC	B			←				
12 VDC ⁵	C							
12 VAC ⁶	G							
24 VDC/AC	E							
220 VAC	F							
Option 1	Code					←		
None	1							
Torque switches	2							
4-20mA input/output modulating controller	3							
Current position transmitter	4							
Potentiometer	5							
Local control unit	6							
Two extra travel cams and switches	7							
Three position cam set	8							
Local control unit with lock	9							
1-5V input/2-10V output modulating controller	A							
2-10V input/output modulating controller	B							
75% duty cycle ³	C							
Four position cam set	D							
Heater thermostat	E							
No heater	F							
Torque limiter	G							
Option 2⁴	Code						←	
None	1							
Torque switches	2							
4-20mA input/output modulating controller	3							
Current position transmitter	4							
Potentiometer	5							
Local control unit	6							
Two extra travel cams and switches	7							
Three position cam set	8							
Local control unit with lock	9							
1-5V input/2-10V output modulating controller	A							
2-10V input/output modulating controller	B							
75% duty cycle ³	C							
Four position cam set	D							
Heater thermostat	E							
No heater	F							
Torque limiter	G							
Indicator	Code							
Open/close (standard)	blank							←
L-port	-L							
T-port	-T							

¹ No options available.² Options 1, 7, & E available.³ Not available in 220 VAC.⁴ If 2 options selected, list lower code first.⁵ Cannot be selected in combination with Option 1 or 2 Codes A and B.⁶ 12 VAC only available in OM-1 model.NOTE: Do not duplicate options selected from Option 1 to Option 2.
Some options are not available to combine.

BEO-Series Electric Actuator - Supply Voltages

Model	Voltages								
	12 V		24 V		1-Phase		3-Phase		
	DC	AC	DC	AC	110-120 V	220-240 V	220-240 V	380-415 V	440-480 V
BM-T	✓		✓	✓	✓	✓			
OM-1	✓	✓	✓	✓	✓	✓			
OM-A	✓		✓	✓	✓	✓			
BM-2					✓	✓	✓	✓	✓
OM-2 to OM-6	✓		✓	✓	✓	✓	✓	✓	✓

Standard Mounting Specs

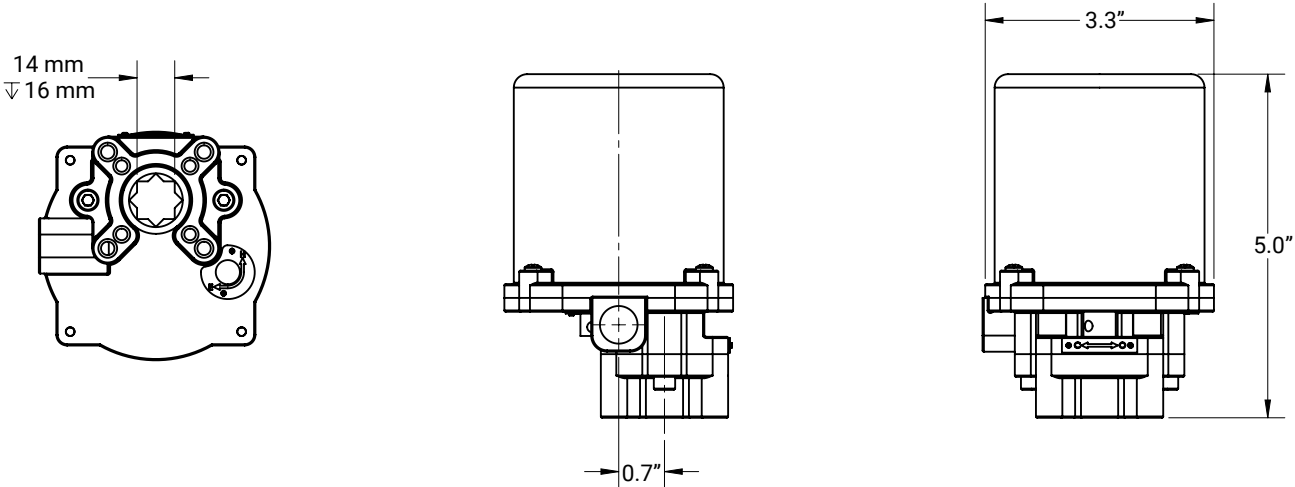
Model	Mounting Flange ISO 5211
BM-2	F07
BM-T	F03 / F05
OM-A	F05 / F07
OM-1	F03 / F05
OM-2 & OM-3	F07 / F10
OM-4, OM-5, & OM-6	F10 / F12

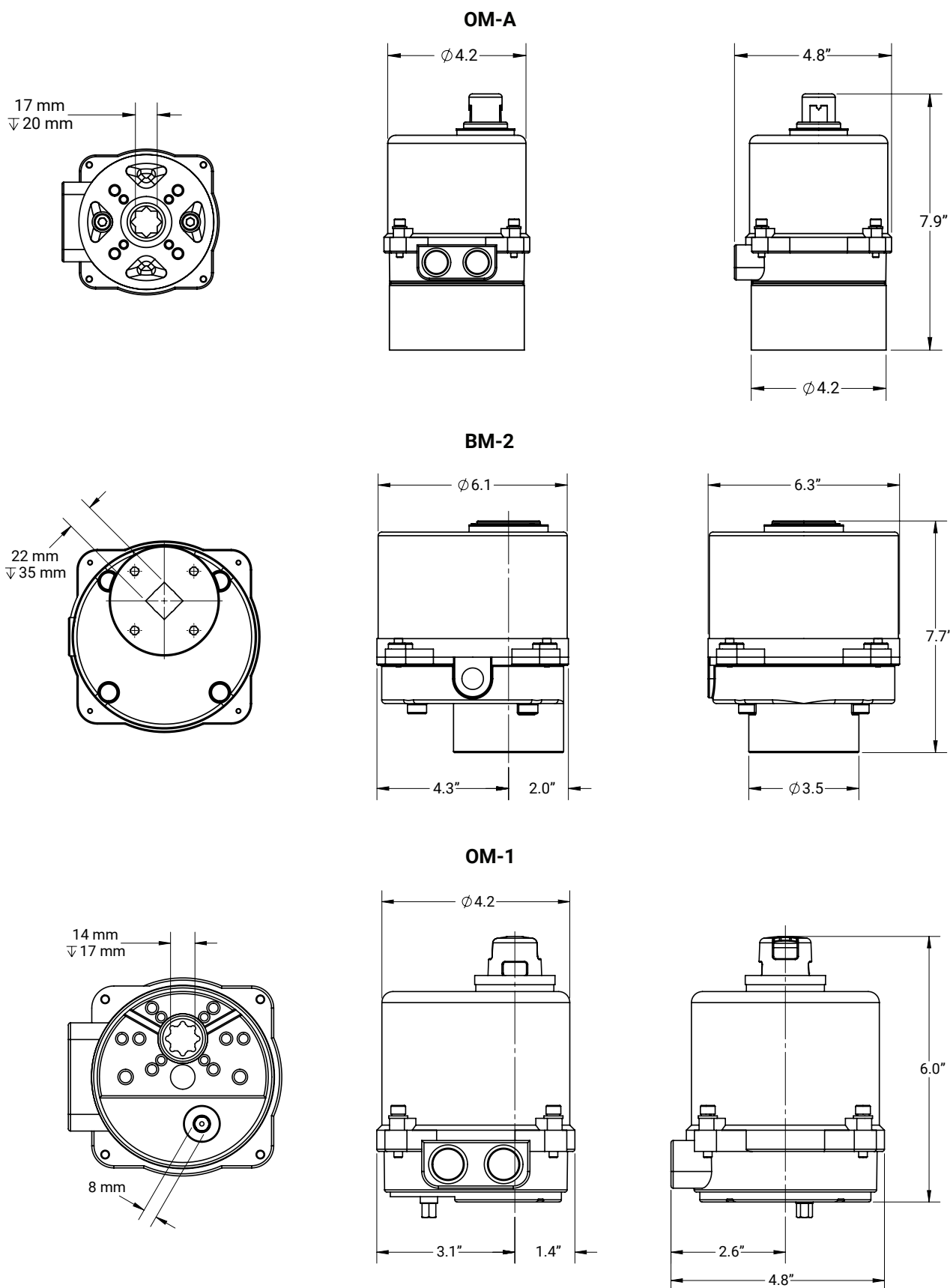
Torque, Weight, and Override Specifications

Model	Output Torque		Weight		Manual Override
	N-m	in-lbs	kg	lbs	
BM-T	15	132	1.5	3.3	lever
OM-A	50	443	3	6.61	-
OM-1	35	310	2	4.41	lever
BM-2	120	1063	5.5	12.13	hand wheel
OM-2	90	797	11	24.25	
OM-3	150	1328	11	24.25	
OM-4	400	3542	20	44.09	
OM-5	500	4427	20	44.09	
OM-6	650	5756	20	44.09	

BEO-Series Electric Actuator - Dimensions

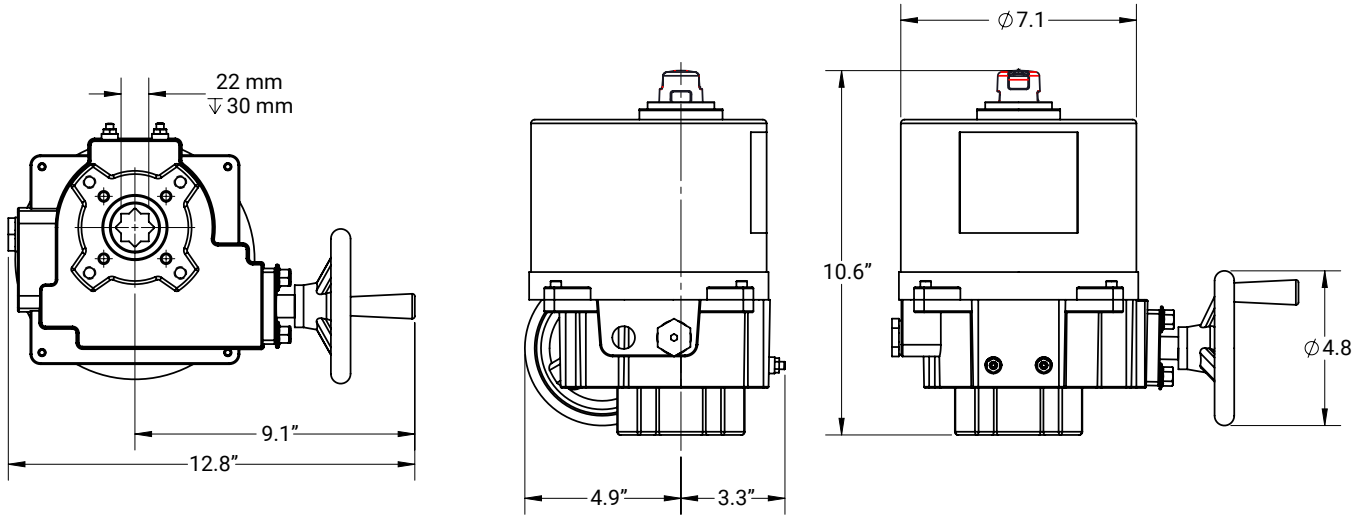
BM-T



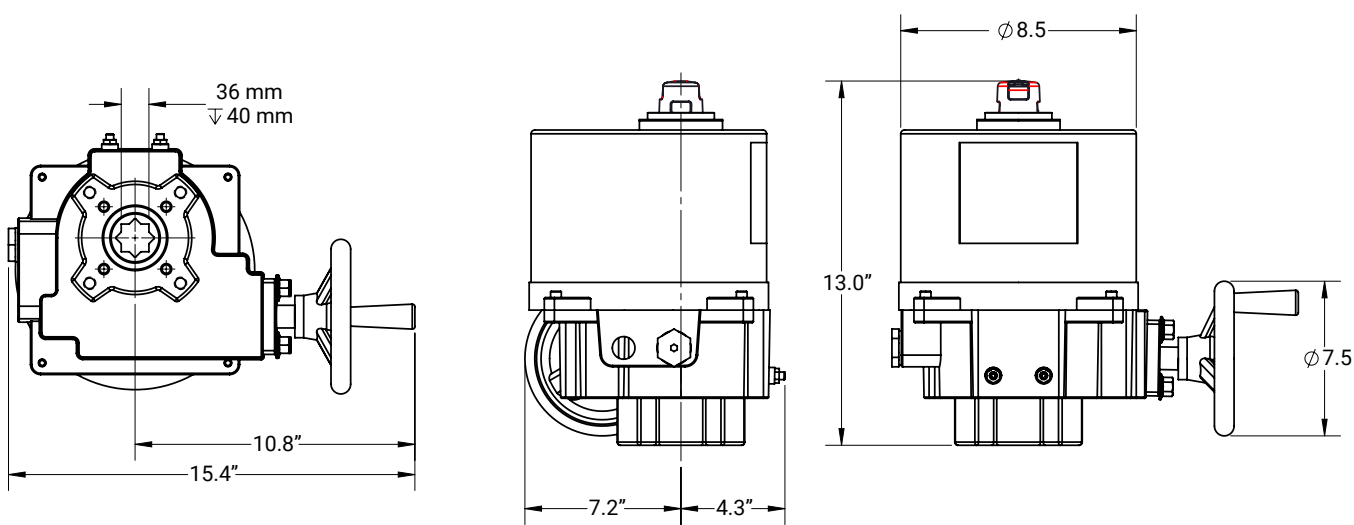
BEO-Series Electric Actuator - Dimensions

BEO-Series Electric Actuator - Dimensions

OM-2 & OM-3



OM-4, OM-5, & OM-6



BEO-Series Electric Actuator - Electrical Data

BM-T and OM-1 to 6, 1 PH, 30% and 75% duty cycle

BM-T, 1 PH, 30% duty cycle

Voltage	Motor Power	Running Current			Running Time			Start Current		
		DC	60 Hz	50 Hz	DC	60 Hz	50 Hz	DC	60 Hz	50 Hz
	Watt	Amp	Amp	Amp	Sec/90°	Sec/90°	Sec/90°	Amp	Amp	Amp
12	5	0.6	-	-	18	-	-	4	-	-
24		0.4	0.6	0.7	16	19	23	4	2	2
110-120		-	0.3	0.3	-	19	23	-	1	1
220-240		-	0.2	0.2	-	19	23	-	1	1

12VAC/DC, Floating Control, 75% duty cycle

Model	Motor Power	Running Current			Running Time			Start Current		
		DC	60 Hz	50 Hz	DC	60 Hz	50 Hz	DC	60 Hz	50 Hz
	Watt	Amp	Amp	Amp	Sec/90°	Sec/90°	Sec/90°	Amp	Amp	Amp
OM-1	10	2.1	2.4	2.3	22	22	21	3	4	4
OM-A	10	2.5	-	-	34	-	-	3	-	-
OM-2	40	4.5	-	-	15	-	-	12	-	-
OM-3	40	4.6	-	-	24	-	-	8	-	-
OM-4	80	14.0	-	-	21	-	-	22	-	-
OM-5	80	14.9	-	-	29	-	-	27	-	-
OM-6	80	12.3	-	-	35	-	-	18	-	-

24VAC/DC, Floating Control, 75% duty cycle

Model	Motor Power	Running Current			Running Time			Start Current		
		DC	60 Hz	50 Hz	DC	60 Hz	50 Hz	DC	60 Hz	50 Hz
	Watt	Amp	Amp	Amp	Sec/90°	Sec/90°	Sec/90°	Amp	Amp	Amp
OM-1	10	1.4	1.6	1.6	18	18	18	2.0	8.0	8.0
OM-A	10	1.4	1.6	1.6	36	37	37	2.0	8.0	8.0
OM-2	40	2.8	3.4	3.4	18	18	17	10.0	11.0	12.0
OM-3	40	2.6	3.1	3.1	27	26	26	10.0	11.0	12.0
OM-4	80	7.7	9.4	9.4	21	20	20	20.0	30.0	30.0
OM-5	80	7.4	8.9	9	28	26	26	20.0	30.0	30.0
OM-6	80	9.0	11.1	11.6	37	37	39	20.0	30.0	30.0

24VAC/DC, Modulating Control, 75% duty cycle

Model	Motor Power	Running Current			Running Time			Start Current		
		DC	60 Hz	50 Hz	DC	60 Hz	50 Hz	DC	60 Hz	50 Hz
	Watt	Amp	Amp	Amp	Sec/90°	Sec/90°	Sec/90°	Amp	Amp	Amp
OM-1	10	1.3	2.8	2.8	18	18	18	2.0	8.0	8.0
OM-A	10	1.3	2.8	2.8	36	37	37	2.0	8.0	8.0
OM-2	40	2.8	3.40	3.40	18	18	17	10.0	11.0	12.0
OM-3	40	2.6	3.1	3.1	27	26	26	10.0	11.0	12.0
OM-4	80	7.7	9.4	9.4	21	20	20	20.0	30.0	30.0
OM-5	80	7.4	8.9	9.0	28	26	26	20.0	30.0	30.0
OM-6	80	9.0	11.1	11.6	37	37	39	20.0	30.0	30.0

BEO-Series Electric Actuator - Electrical Data

110-120 VAC, Floating Control, 75% duty cycle

Model	Motor Power	Running Current		Running Time		Start Current	
		60 Hz	50 Hz	60 Hz	50 Hz	60 Hz	50 Hz
	Watt	Amp	Amp	Sec/90°	Sec/90°	Amp	Amp
OM-1	10	0.6	0.6	15	15	3.0	3.0
OM-A	10	0.6	0.6	28	28	3.0	3.0
OM-2	40	0.8	0.8	19	19	9.0	9.0
OM-3	40	0.7	0.7	29	28	9.0	9.0
OM-4	80	2.1	2.2	24	23	17.0	17.0
OM-5	80	1.9	1.9	28	28	17.0	17.0
OM-6	80	2.0	2.1	38	38	17.0	17.0

110-120 VAC, Modulating Control, 75% duty cycle

Model	Motor Power	Running Current		Running Time		Start Current	
		60 Hz	50 Hz	60 Hz	50 Hz	60 Hz	50 Hz
	Watt	Amp	Amp	Sec/90°	Sec/90°	Amp	Amp
OM-1	10	0.6	0.6	18	17	3.0	2.0
OM-A	10	0.6	0.6	33	33	3.0	2.0
OM-2	40	0.8	0.8	19	19	9.0	9.0
OM-3	40	0.7	0.7	29	28	9.0	9.0
OM-4	80	2.1	2.2	24	23	17.0	17.0
OM-5	80	1.9	1.9	28	28	17.0	17.0
OM-6	80	2.0	2.1	38	38	17.0	17.0

110-120 VAC, Floating Control, 30% duty cycle

Model	Motor Power	Running Current		Running Time		Start Current	
		60 Hz	50 Hz	60 Hz	50 Hz	60 Hz	50 Hz
	Watt	Amp	Amp	Sec/90°	Sec/90°	Amp	Amp
OM-1	10	0.7	0.8	12	17	2.0	2.0
OM-A	10	0.7	0.8	27	37	2.0	2.0
OM-2	40	1.2	1.7	17	20	3.0	4.0
BM-2	40	1.3	1.6	9	11	4.0	4.0
OM-3	40	1.2	1.7	26	31	3.0	4.0
OM-4	80	2.1	2.4	19	23	7.0	7.0
OM-5	80	2.0	2.4	26	31	7.0	7.0
OM-6	80	2.4	2.5	34	41	7.0	7.0

110-120 VAC, Modulating Control, 30% duty cycle

Model	Motor Power	Running Current		Running Time		Start Current	
		60 Hz	50 Hz	60 Hz	50 Hz	60 Hz	50 Hz
	Watt	Amp	Amp	Sec/90°	Sec/90°	Amp	Amp
OM-2	40	1.2	1.7	17	20	3.0	4.0
OM-3	40	1.2	1.7	26	31	3.0	4.0
OM-4	80	2.1	2.4	19	23	7.0	7.0
OM-5	80	2.0	2.4	26	31	7.0	7.0
OM-6	80	2.4	2.5	34	41	7.0	7.0

BEO-Series Electric Actuator - Electrical Data

220-240 VAC, Floating Control, 75% duty cycle

Model	Motor Power	Running Current		Running Time		Start Current	
		60 Hz	50 Hz	60 Hz	50 Hz	60 Hz	50 Hz
	Watt	Amp	Amp	Sec/90°	Sec/90°	Amp	Amp
OM-1	10	0.4	0.4	15	15	2.0	2.0
OM-A	10	0.4	0.4	28	28	2.0	2.0
OM-2	40	0.4	0.4	16	16	6.0	7.0
OM-3	40	0.4	0.4	26	25	6.0	7.0
OM-4	80	1.1	1.1	22	22	15.0	14.0
OM-5	80	1.0	1.1	28	28	15.0	14.0
OM-6	80	1.0	1.1	35	35	15.0	14.0

220-240 VAC, Modulating Control, 75% duty cycle

Model	Motor Power	Running Current		Running Time		Start Current	
		60 Hz	50 Hz	60 Hz	50 Hz	60 Hz	50 Hz
	Watt	Amp	Amp	Sec/90°	Sec/90°	Amp	Amp
OM-1	10	0.4	0.4	18	18	2.0	2.0
OM-A	10	0.4	0.4	30	30	2.0	2.0
OM-2	40	0.4	0.4	16	16	6.0	7.0
OM-3	40	0.4	0.4	26	25	6.0	7.0
OM-4	80	1.1	1.1	22	22	15.0	14.0
OM-5	80	1.0	1.1	28	28	15.0	14.0
OM-6	80	1.0	1.1	35	35	15.0	14.0

220-240 VAC, Floating Control, 30% duty cycle

Model	Motor Power	Running Current		Running Time		Start Current	
		60 Hz	50 Hz	60 Hz	50 Hz	60 Hz	50 Hz
	Watt	Amp	Amp	Sec/90°	Sec/90°	Amp	Amp
OM-1	10	0.4	0.4	15	17	3.0	2.0
OM-A	10	0.4	0.4	25	33	3.0	2.0
OM-2	40	0.6	0.8	17	21	2.0	2.0
BM-2	40	0.6	0.8	9	11	2.0	2.0
OM-3	40	0.6	0.8	26	31	2.0	2.0
OM-4	80	1.1	1.3	20	23	4.0	4.0
OM-5	80	1.0	1.3	26	31	4.0	4.0
OM-6	80	1.1	1.3	34	40	4.0	4.0

BEO-Series Electric Actuator - Electrical Data**220-240 VAC, Modulating Control, 30% duty cycle**

Model	Motor Power	Running Current		Running Time		Start Current	
		60 Hz	50 Hz	60 Hz	50 Hz	60 Hz	50 Hz
	Watt	Amp	Amp	Sec/90°	Sec/90°	Amp	Amp
OM-2	40	0.6	0.8	17	21	2.0	2.0
OM-3	40	0.6	0.8	26	31	2.0	2.0
OM-4	80	1.1	1.3	20	23	4.0	4.0
OM-5	80	1.0	1.3	26	31	4.0	4.0
OM-6	80	1.1	1.3	34	40	4.0	4.0

OM-2 to OM-6, 3 PH, 30% duty cycle**220-240 VAC, Floating Control, 30% duty cycle**

Model	Motor Power	Running Current		Running Time		Start Current	
		60 Hz	50 Hz	60 Hz	50 Hz	60 Hz	50 Hz
	Watt	Amp	Amp	Sec/90°	Sec/90°	Amp	Amp
OM-2	40	0.5	0.6	16	19	1.3	1.4
BM-2	40	0.5	0.6	9	10	1.6	1.6
OM-3	40	0.5	0.6	26	31	1.3	1.4
OM-4	80	0.9	1.0	21	24	2.9	3.1
OM-5	80	0.9	1.0	27	31	2.9	3.1
OM-6	80	0.9	1.0	34	40	2.9	3.1

Limited Warranty

DIXON VALVE & COUPLING COMPANY, LLC (herein called "Dixon") warrants the products described herein and manufactured by Dixon to be free from defects in material and workmanship for a period of one (1) year from date of shipment by Dixon under normal use and service. Its sole obligation under this warranty being limited to repairing or replacing, as hereinafter provided, at its option any product found to Dixon's satisfaction to be defective upon examination by it, provided that such product shall be returned for inspection to Dixon's factory within three (3) months after discovery of the defect. The repair or replacement of defective products will be made without charge for parts or labor. This warranty shall not apply to: (a) parts or products not manufactured by Dixon, the warranty of such items being limited to the actual warranty extended to Dixon by its supplier; (b) any product that has been subject to abuse, negligence, accident, or misapplication; (c) any product altered or repaired by others than Dixon; and (d) normal maintenance services and the replacement of service items (such as washers, gaskets, and lubricants) made in connection with such services. To the extent permitted by law, this limited warranty shall extend only to the buyer and any other person reasonably expected to use or consume the goods who is injured in person by any breach of the warranty. No action may be brought against Dixon for an alleged breach of warranty unless such action is instituted within one (1) year from the date the cause of action accrues. This limited warranty shall be construed and enforced to the fullest extent allowable by applicable law.

Other than the obligation of Dixon set forth herein, Dixon disclaims all warranties, express or implied, including but not limited to any implied warranties of merchantability or fitness for a particular purpose, and any other obligation or liability. The foregoing constitutes Dixon's sole obligation with respect to damages, whether direct, incidental, or consequential, resulting from the use or performance of the product.

Some products and sizes may be discontinued when stock is depleted or may require a minimum quantity for ordering.

Limits of Liability

This brochure is intended as a product offering. It is not intended to be a user or technical manual. Information in this brochure is subject to change without notice. All users and distributors of products sold through this brochure should contact Dixon with questions of use, compatibilities, coupling procedures, and life of product. Our full-time engineering and test staff are always available to recommend uses and to assist distributors and users with any questions.



Safety



Safety logos, which appear throughout our catalog, are used as a reminder that the user should carefully review for the appropriateness of the product for the media, application, and environment in which it will be used.

NOTE: Because of the health hazards associated with contamination and lead content in drinking water systems, Dixon couplings, unless otherwise specifically approved, are not recommended for potable water service and should not be used in applications where drinking water will contact the wetted surfaces of the coupling.

All Dixon products are shipped in cartons with the following warning:

"WARNING: This product contains lead, a chemical known to the State of California to cause cancer and birth defects or other reproductive harm."

Trademark

Delrin® and Zytel® are registered trademarks of E. I. du Pont de Nemours and Company.

Kalrez® is a registered trademark of DuPont Dow Elastomers.

All other trademarks appearing in the Dixon illustrated product list are the property of their respective owners.

Copyright

Copyright © 2025 by Dixon Valve & Coupling Company, LLC

All rights reserved. This book is copyrighted material. Use, reproduction or copying of it by anyone other than Dixon® is strictly forbidden without its express written consent.

NOTE: Reasonable care has been taken in preparing this catalog. Dixon Valve & Coupling Company, LLC reserves the right to make corrections.



connect with us on



DSEPRGBEO_0825_Rev5