

## Straub Open-Flex 1L Couplings

**Applications:**

- suitable for repairing or joining pipes where access to the pipe end is difficult or impossible

**Features:**

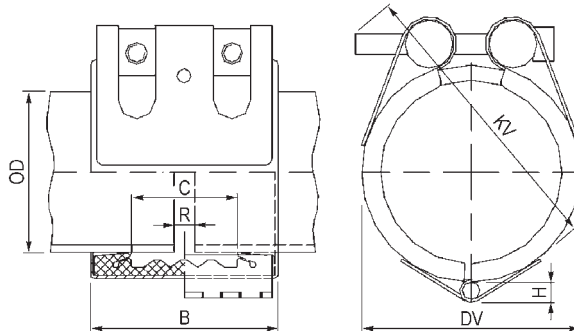
- use to replace bolted sleeve type couplings (AWWA Std. C-219) or for permanent repairs or installation
- wrap-around design differs from similar type repair products because the installation or repair is permanent due to the unique flexible lip seal gasket design
- joins like or dissimilar pipe materials: steel, galvanized, painted, stainless steel, thin-wall stainless steel, PVC, copper
- requires no special tools or pipe-end preparation; only a torque wrench is required for a secure and safe pipe connection that seldom needs retightening
- accommodates up to 5° of pipe misalignment
- vary gap between pipe ends
- absorbs vibration, water hammer, and sound
- acts as an expansion joint; will accept up to .25" of axial movement
- EPDM sealing sleeve temperature range: - 4°F to 176°F (-20°C to 80°C)
- 5 year limited warranty
- reusable

**Materials:**

- casing: AISI 316Ti; screws: AISI 4135 steel; bolts: AISI 12L 14 galvanized

**Specifications:**

- American Bureau of Shipping (ABS) up to **232 PSI**
- Underwriter's Laboratories (UL)
- National Sanitation Foundation (NSF)
- conforms to ASTM 1476, Type 2, Class 3 specifications



Size	Pipe OD Range		Working Pressure PSI	Coupling Dimensions			Assembled Dimensions		Maximum Distance Between Pipe End R	316 Ti Stainless Steel Part #
	actual	min to max		B	C	H	DV	KV		
1½"	1.90"	1.85" to 1.95"	<b>363</b>	3.0"	1.4"	.28"	2.8"	3.3"	.20"	<b>STR35001</b>
2"	2.38"	2.32" to 2.42"	<b>232</b>	3.0"	1.4"	.28"	3.2"	3.7"	.20"	<b>STR35151</b>
2½"	2.88"	2.81" to 2.93"	<b>232</b>	3.0"	1.4"	.36"	3.2"	3.7"	.20"	<b>STR35201</b>
3"	3.50"	3.44" to 3.56"	<b>232</b>	3.7"	2.0"	.36"	4.4"	4.9"	.20"	<b>STR35351</b>
4"	4.50"	4.43" to 4.57"	<b>232</b>	3.7"	2.0"	.36"	5.4"	5.9"	.20"	<b>STR35651</b>
5"	5.56"	5.49" to 5.57"	<b>232</b>	4.2"	2.4"	.38"	6.4"	7.1"	.20"	<b>STR35901</b>
6"	6.63"	6.54" to 6.71"	<b>232</b>	4.2"	2.4"	.38"	7.5"	8.1"	.20"	<b>STR36051</b>



**Note: Not pull-out resistant.** Ensure that pipes are properly anchored and supported.

**Assembly Tool**

Part #  
**STR6648**

