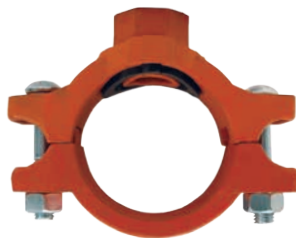




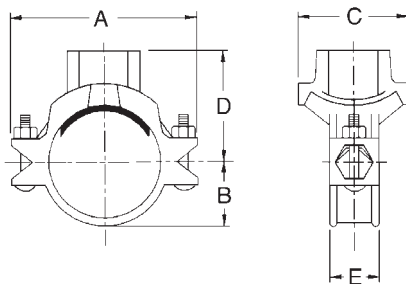
Mechanical Tees - Series T

Features:

- Provides a fast easy way to install a threaded connection along a length of pipe. After drilling or cutting a hole in the pipe at the location of the branch connection, simply attach the clamps around the pipe for a leak-free threaded outlet connection. See chart below for drilling hole specifications
- ductile iron body with rust inhibiting paint
- supplied with EPDM gasket
- Underwriters Listed and Factory Mutual approved
- maximum operating pressure: **300 PSI at 70°F (21°C)**
- see pages 695, 701 for replacement gaskets, nuts and bolts
- Comparable to:
Victaulic's #920
Grinnell's #7045



Nominal Size	Branch Size	Hole Saw Diameter	Maximum End Load (Lbs.)	qty	Bolts size	length	Ductile Iron Part #
2"	1"	1½"	1⅝"	2	⅜"	2"	MT2010
	1¼"	1¾"	1⅞"	2	⅜"	2"	MT20125
	1½"	1¾"	1⅞"	2	⅜"	2"	MT20150
2½"	1¼"	2"	2⅛"	2	½"	2⅝"	MT250125
3"	1"	1½"	1⅝"	2	½"	2¾"	MT3010
	1½"	2"	2⅞"	2	½"	2¾"	MT30150
4"	1"	1½"	1⅝"	2	½"	2¾"	MT4010
	1¼"	2"	2⅞"	2	½"	2¾"	MT40125
	1½"	2"	2⅞"	2	½"	2¾"	MT40150
	2"	2½"	2⅝"	2	½"	2¾"	MT4020
	2½"	2¾"	2⅞"	2	½"	2¾"	MT40250
	3"	3½"	3⅝"	2	½"	2¾"	MT4030
6"	1¼"	2½"	2⅝"	2	⅝"	3¼"	MT60125
	1½"	2½"	2⅝"	2	⅝"	3¼"	MT60150
	2"	2½"	2⅝"	2	⅝"	3¼"	MT6020
	3"	3½"	3⅝"	2	⅝"	3¼"	MT6030



Dimensions

A	B	C	D	E
4½"	1⅝"	2¾"	2¼"	1⅞"
4½"	1⅝"	2¾"	2½"	1⅞"
4½"	1⅝"	2¾"	2½"	1⅞"
5-5/32"	1-11/16"	3"	2-31/32"	2"
5-13/16"	1-11/16"	3-11/32"	3"	2"
6-11/32"	2-1/8"	3-3/32"	3-1/16"	2"
6-11/32"	2-1/8"	3-3/4"	3-3/8"	2"
7-5/16"	2-9/16"	3-3/32"	3-1/2"	2"
7-5/16"	2-9/16"	3-3/4"	3-7/8"	2"
7-5/16"	2-9/16"	3-3/4"	3-7/8"	2"
7-5/16"	2-9/16"	4-1/8"	4"	2"
7-5/16"	2-9/16"	4-3/8"	4"	2"
7-5/16"	2-9/16"	5-1/4"	4-1/4"	2"
10-5/32"	3-11/16"	4-1/8"	4-7/8"	2¼"
10-5/32"	3-11/16"	4-1/8"	4-7/8"	2¼"
10-5/32"	3-11/16"	4-1/8"	5"	2¼"
10-5/32"	3-11/16"	5-1/4"	5-3/8"	2¼"